



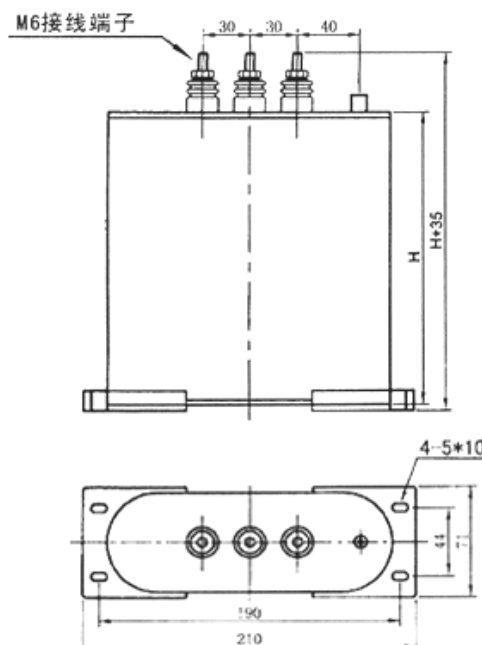
Features

Power Factor Correction Capacitor, BSMJ Power Capacitor

The product conforms to the standard requirements of international electrician committee IEC831-1 & 2, GB/T12747-2004. The capacitor is suitable for parallel connect with load in AC electric power system with 50Hz or 60Hz, rated voltage 1000V or below it in order to improve the power factor.

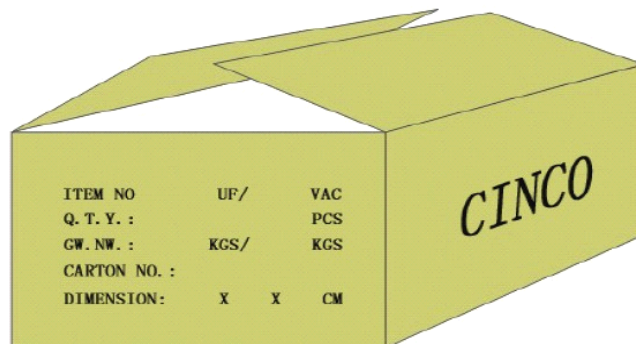
The outer shell is made of special steel sheet which treated by frosting and anti-rust process. It has beautiful outlook, firm and rust protection. Replace the breakable insulator with steady wire terminal, in order to eliminate product leakage and spoiling. when arranging. The internal component: electrode & medium is made up of metalizing polypropylene film, which makes the product with high self recovery performance, light weight , small volume and low consumption. The capacitor with over voltage protection device and discharging resistance, which makes it with high reliability and safe performance.

Capacitor Drawing



Packing and Mark

POWER CAPACITOR	
Quality Standards: IEC60831-1996 CE	
SH-TYPE POWER CAPACITOR(NO PCB)	
Type	BSMJ0.44-25-3
Rated Voltage	440V/50Hz
Rated Output	25kvar(411 μ F)
Rated Current	32.8A
Product No.	
Discharging resistance and insurance device are included 	



Dimensions

Model	Rated Voltage	Rated Capacity (kVar)	Rated Capacity (μ F)	Rated Current (A)	Size(mm) L×W×H	Installation Size (mm)
BSMJ0.4-5-3	400	5	3×33	3×7.2	180×64×135	190×44
BSMJ0.4-7.5-3	400	7.5	3×50	3×10.8	180×64×135	190×44
BSMJ0.4-10-3	400	10	3×66	3×14.4	180×64×135	190×44
BSMJ0.4-12.5-3	400	12.5	3×83	3×18	180×64×190	190×44
BSMJ0.4-15-3	400	15	3×100	3×21.7	180×64×190	190×44
BSMJ0.4-16-3	400	16	3×106	3×23	180×64×190	190×44
BSMJ0.4-20-3	400	20	3×133	3×29	180×64×210	190×44
BSMJ0.4-22.5-3	400	22.5	3×149	3×32.5	180×64×210	190×44
BSMJ0.4-25-3	400	25	3×166	3×36	180×64×270	190×44
BSMJ0.4-30-3	400	30	3×199	3×43.3	180×64×270	190×44

Power Factor Correction Capacitor

Model : BSMJ Capacitor

Model	Rated Voltage	Rated Capacity (kVar)	Rated Capacity (μF)	Rated Current (A)	Size(mm) L×W×H	Installation Size (mm)
BSMJ0.44-5-3	440	5	3×27.4	3×6.6	180×64×135	190×44
BSMJ0.44-7.5-3	400	7.5	3×41.1	3×9.8	180×64×135	190×44
BSMJ0.44-10-3	440	10	3×54.8	3×13.1	180×64×135	190×44
BSMJ0.44-12.5-3	400	12.5	3×68.5	3×16.4	180×64×135	190×44
BSMJ0.44-15-3	440	15	3×82.2	3×19.7	180×64×190	190×44
BSMJ0.44-16-3	400	16	3×87.7	3×21	180×64×190	190×44
BSMJ0.44-20-3	440	20	3×109.6	3×26.2	180×64×190	190×44
BSMJ0.44-22.5-3	400	22.5	3×123.3	3×29.5	180×64×210	190×44
BSMJ0.44-25-3	440	25	3×137	3×32.8	180×64×210	190×44
BSMJ0.44-30-3	400	30	3×164.4	3×39.4	180×64×270	190×44

Model	Rated Voltage	Rated Capacity (kVar)	Rated Capacity (μF)	Rated Current (A)	Size(mm) L×W×H	Installation Size (mm)
BSMJ0.525-5-3	525	5	3×19.2	3×5.5	180×64×135	190×44
BSMJ0.525-7.5-3	525	7.5	3×28.9	3×8.2	180×64×135	190×44
BSMJ0.525-10-3	525	10	3×38.5	3×11	180×64×135	190×44
BSMJ0.525-12.5-3	525	12.5	3×48.1	3×13.7	180×64×190	190×44
BSMJ0.525-15-3	525	15	3×57.7	3×16.5	180×64×190	190×44
BSMJ0.525-16-3	525	16	3×61.6	3×17.6	180×64×190	190×44
BSMJ0.525-20-3	525	20	3×77	3×22	180×64×210	190×44
BSMJ0.525-22.5-3	525	22.5	3×86.6	3×24.7	180×64×210	190×44
BSMJ0.525-25-3	525	25	3×96.2	3×27.5	180×64×270	190×44
BSMJ0.525-30-3	525	30	3×115.5	3×33	180×64×270	190×44

Model	Rated Voltage	Rated Capacity (kVar)	Rated Capacity (μF)	Rated Current (A)	Size(mm) L×W×H	Installation Size (mm)
BSMJ0.69-5-3	690	5	33	3×4.2	180×64×135	190×44
BSMJ0.69-7.5-3	690	7.5	50	3×6.3	180×64×135	190×44
BSMJ0.69-10-3	690	10	66	3×8.4	180×64×135	190×44
BSMJ0.69-12.5-3	690	12.5	83	3×10.5	180×64×190	190×44
BSMJ0.69-15-3	690	15	100	3×12.6	180×64×190	190×44
BSMJ0.69-16-3	690	16	106	3×13.4	180×64×190	190×44
BSMJ0.69-20-3	690	20	133	3×16.7	180×64×210	190×44
BSMJ0.69-22.5-3	690	22.5	149	3×18.8	180×64×210	190×44
BSMJ0.69-25-3	690	25	166	3×21	180×64×270	190×44
BSMJ0.69-30-3	690	30	199	3×25.1	180×64×270	